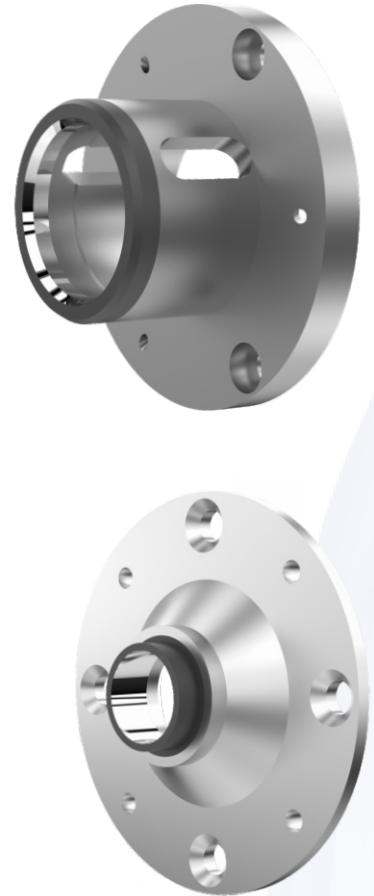


## DRIVING PLATES

- » Driving plates are used for driving the inner and the outer races during the grinding and lapping operation.
- » These are basically used for linkoping and telinaus machines.
- » Parallelism between the 2 faces are maintained within 4 microns.
- » Every component is lapped to high degree of finish.
- » Positioning of all the holes within 0.01 to avoid any problems during the assembly.
- » Many different geometry of driving plates are manufactured and supplied to major bearing manufacturer around the world.



## CLAMPING PLATES

- » Clamping plates are used for holding the races against the driving plate during the grinding of inner and outer races during grinding and lapping .
- » Parallelism is maintained within 4 micron among the faces.
- » Clamping plate in combination with driving plate and shoe make entire set of tools for race grinding. This is done without holding the races radially and thereby giving high accuracy in bearings.