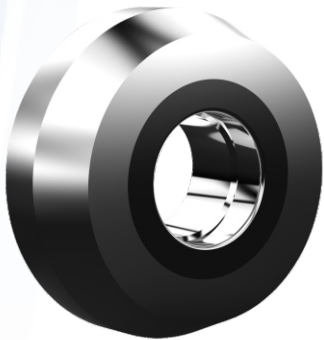
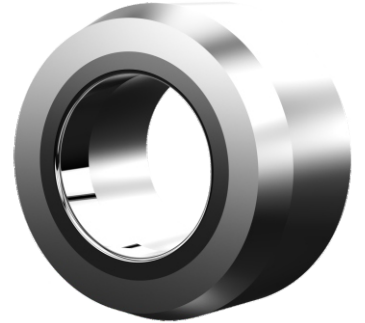


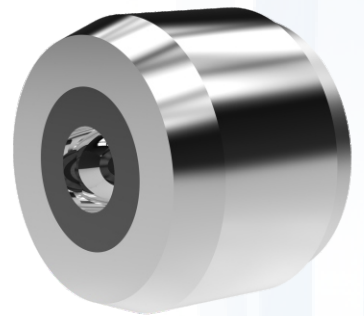
TOOLING FOR COLLAPSIBLE TUBES AND CAN AND CONTAINER

- » Parin Engineering has introduced carbide rings for manufacturing of Aluminium Tubes in India.



- » Aluminium tubes are manufactured with backward extrusion process in which the slug is subjected to heavy load and thereby material flowing in reverse direction and forming the shape of tube.

- » Combine die has been developed to form the tube along with the nozzle, thereby reducing the setting time and increase in productivity.



- » Further research in the field has helped us to develop dies for can manufacturing as well as bidding roller used for Necking.
- » Replacement of steel dies with carbide rings has bought substantial revolution in the industry.